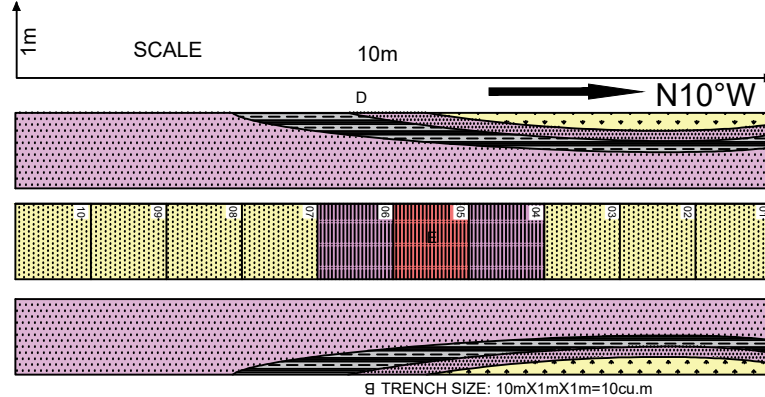
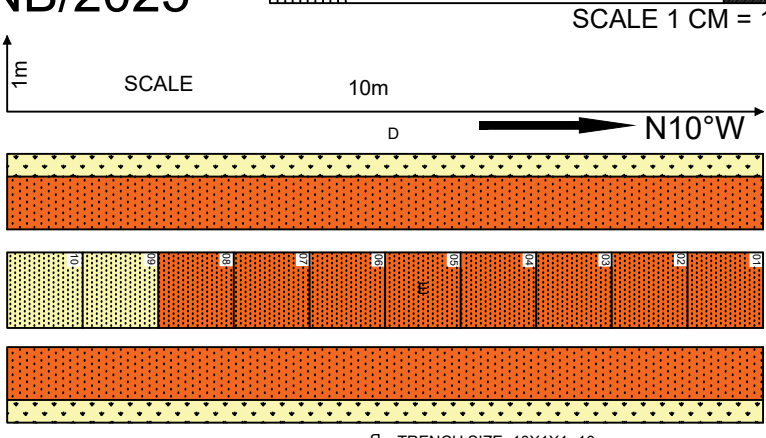


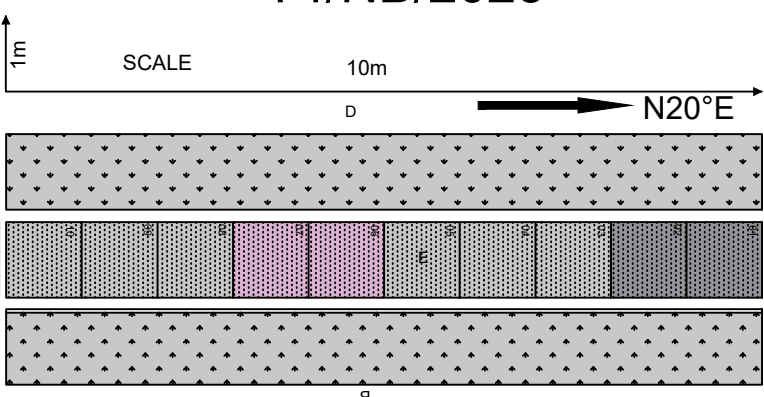
Sample No	SiO2 (%)	Al2O3 (%)	Fe2O3 (%)	TiO2 (%)	V (ppm)
T1/NB/2025/01	65.86	20.98	3.78	0.71	30.80
T1/NB/2025/02	59.68	20.88	5.11	0.80	41.40
T1/NB/2025/03	68.99	18.41	3.72	0.80	31.90
T1/NB/2025/04	70.24	19.10	2.78	0.70	23.80
T1/NB/2025/05	69.42	20.94	2.14	0.87	25.50
T1/NB/2025/06	68.86	21.65	2.07	0.74	22.70
T1/NB/2025/07	68.34	20.82	2.00	1.01	26.80
T1/NB/2025/08	68.77	19.32	2.07	0.88	29.60
T1/NB/2025/09	57.08	20.04	6.35	0.58	43.40
T1/NB/2025/10	50.08	20.57	12.45	0.87	76.80
T1/NB/2025/A	63.82	23.92	2.93	0.63	28.70
T1/NB/2025/B	63.24	20.35	4.96	0.85	50.90
T1/NB/2025/C	62.01	20.10	4.74	1.00	64.80
T1/NB/2025/D	61.95	22.86	3.54	0.88	51.30



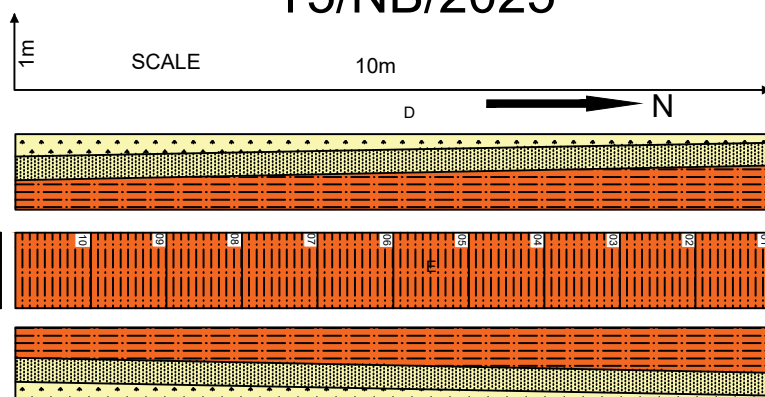
Trench No: T2/NB/2025								
Sample No	SiO2 (%)	Al2O3 (%)	Fe2O3 (%)	TiO2 (%)	V (ppm)	Ga (ppm)	Σ REE (ppm)	Σ REE (Sc+Y)
T2/NB/2025/01	64.98	19.02	4.10	1.61	108.40	—	—	—
T2/NB/2025/02	65.39	20.97	4.09	1.24	56.30	—	—	—
T2/NB/2025/03	62.66	4.83	18.66	0.91	76.90	—	—	—
T2/NB/2025/04	63.51	5.05	18.12	0.85	67.10	—	—	—
T2/NB/2025/05	65.80	18.75	5.33	1.33	40.50	—	—	—
T2/NB/2025/06	56.06	25.04	5.18	1.84	125.30	—	—	—
T2/NB/2025/07	57.98	20.80	6.96	1.09	109.30	17.53	197.72	223.40
T2/NB/2025/08	58.94	19.21	8.56	1.23	93.70	—	—	—
T2/NB/2025/09	61.33	23.02	3.86	1.46	86.00	—	—	—
T2/NB/2025/10	60.91	21.96	4.71	1.52	92.30	—	—	—
T2/NB/2025/A	64.95	18.54	4.63	1.82	78.60	—	—	—
T2/NB/2025/B	61.99	19.24	5.19	1.68	82.00	—	—	—
T2/NB/2025/C	61.13	18.30	8.09	1.40	93.40	—	—	—
T2/NB/2025/D	60.24	18.99	6.98	1.45	87.90	—	—	—




Trench No: T3/NB/2025								
Sample No	SiO2 (%)	Al2O3 (%)	Fe2O3 (%)	TiO2 (%)	V (ppm)	Ga (ppm)	Σ REE (ppm)	Σ REE (Sc+Y)
T3/NB/2025/01	57.96	21.02	9.69	0.79	57.40	—	—	—
T3/NB/2025/02	54.39	23.13	10.40	0.83	84.00	—	—	—
T3/NB/2025/03	53.37	24.48	8.85	0.88	99.70	—	—	—
T3/NB/2025/04	50.30	24.54	11.26	1.05	89.40	—	—	—
T3/NB/2025/05	55.39	20.17	12.95	0.87	85.50	—	—	—
T3/NB/2025/06	56.77	17.70	13.60	1.01	93.90	—	—	—
T3/NB/2025/07	65.72	12.59	12.03	0.90	60.90	—	—	—
T3/NB/2025/08	57.90	22.11	4.91	1.46	76.50	—	—	—
T3/NB/2025/09	56.99	24.13	5.25	1.07	64.80	11.53	173.48	191.44
T3/NB/2025/10	59.81	23.21	3.96	2.02	63.80	—	—	—
T3/NB/2025/A	60.23	18.99	9.46	1.29	89.40	—	—	—
T3/NB/2025/B	54.90	22.92	8.55	1.43	85.60	—	—	—
T3/NB/2025/C	59.24	23.20	4.57	1.66	63.70	—	—	—
T3/NB/2025/D	59.64	22.77	6.14	1.36	71.80	—	—	—



Trench No: T4/NB/2025					
Sample No	SiO2 (%)	Al2O3 (%)	Fe2O3 (%)	TiO2 (%)	V (ppm)
T4/NB/2025/01	63.68	0.65	14.12	0.47	86.20
T4/NB/2025/02	62.67	1.29	15.95	0.48	103.80
T4/NB/2025/03	69.00	2.49	7.36	0.53	61.90
T4/NB/2025/04	65.34	4.64	6.49	0.45	60.50
T4/NB/2025/05	57.60	4.71	15.63	0.48	94.00
T4/NB/2025/06	58.15	0.41	16.09	0.41	84.60
T4/NB/2025/07	73.26	1.00	11.17	0.83	70.30
T4/NB/2025/08	69.01	0.35	7.37	0.44	33.80
T4/NB/2025/09	68.61	0.28	5.81	0.61	42.40
T4/NB/2025/10	69.93	0.31	8.67	0.86	50.70
T4/NB/2025/A	58.96	0.32	9.64	0.48	67.30
T4/NB/2025/B	62.01	0.29	6.61	0.53	37.10
T4/NB/2025/C	63.81	1.39	6.17	0.90	62.20
T4/NB/2025/D	69.33	0.41	5.38	0.52	39.80



Trench No: T5/NB/2025								
Sample No	SiO2 (%)	Al2O3 (%)	Fe2O3 (%)	TiO2 (%)	V (ppm)	Ga (ppm)	Σ REE (ppm)	Σ REE (Sc+Y)
T5/NB/2025/01	54.82	13.92	20.70	0.67	51.80	—	—	—
T5/NB/2025/02	46.38	16.94	18.80	0.69	60.90	—	—	—
T5/NB/2025/03	51.78	9.84	25.05	0.55	49.10	—	—	—
T5/NB/2025/04	53.61	9.99	25.97	0.56	54.78	18.60	157.58	176.86
T5/NB/2025/05	46.31	24.46	16.81	0.98	82.20	—	—	—
T5/NB/2025/06	44.84	23.94	16.91	0.96	82.40	—	—	—
T5/NB/2025/07	51.00	16.55	21.57	0.72	65.00	—	—	—
T5/NB/2025/08	49.81	15.27	23.14	0.60	93.60	—	—	—
T5/NB/2025/09	57.97	12.10	19.02	0.61	64.60	—	—	—
T5/NB/2025/10	55.86	19.77	13.00	0.95	81.0	—	—	—
T5/NB/2025/A	53.04	17.18	7.93	0.89	61.00	—	—	—
T5/NB/2025/B	56.06	27.94	2.31	1.31	66.10	—	—	—
T5/NB/2025/C	59.78	27.00	1.94	0.88	78.05	17.95	236.55	270.11
T5/NB/2025/D	58.61	26.49	2.16	1.27	63.20	—	—	—

	CRITICAL MINERAL TRACKERS	
	ASSAY MAP OF TRENCHS IN NADAPA AREA	
	District: KACHCHH	State: GUJARAT
	R.F. 1:100	
Data Processed By: CMT	Prepared By: S.MD. Akthar, Geologist	
	Checked By: S.U.M. Rao, TAE	
	Approved By: S. Rama Murthy, TAE	
CMT/EXPL/FEBRUARY - 2025	PLATE - X	